



Department of Public Works and Transportation

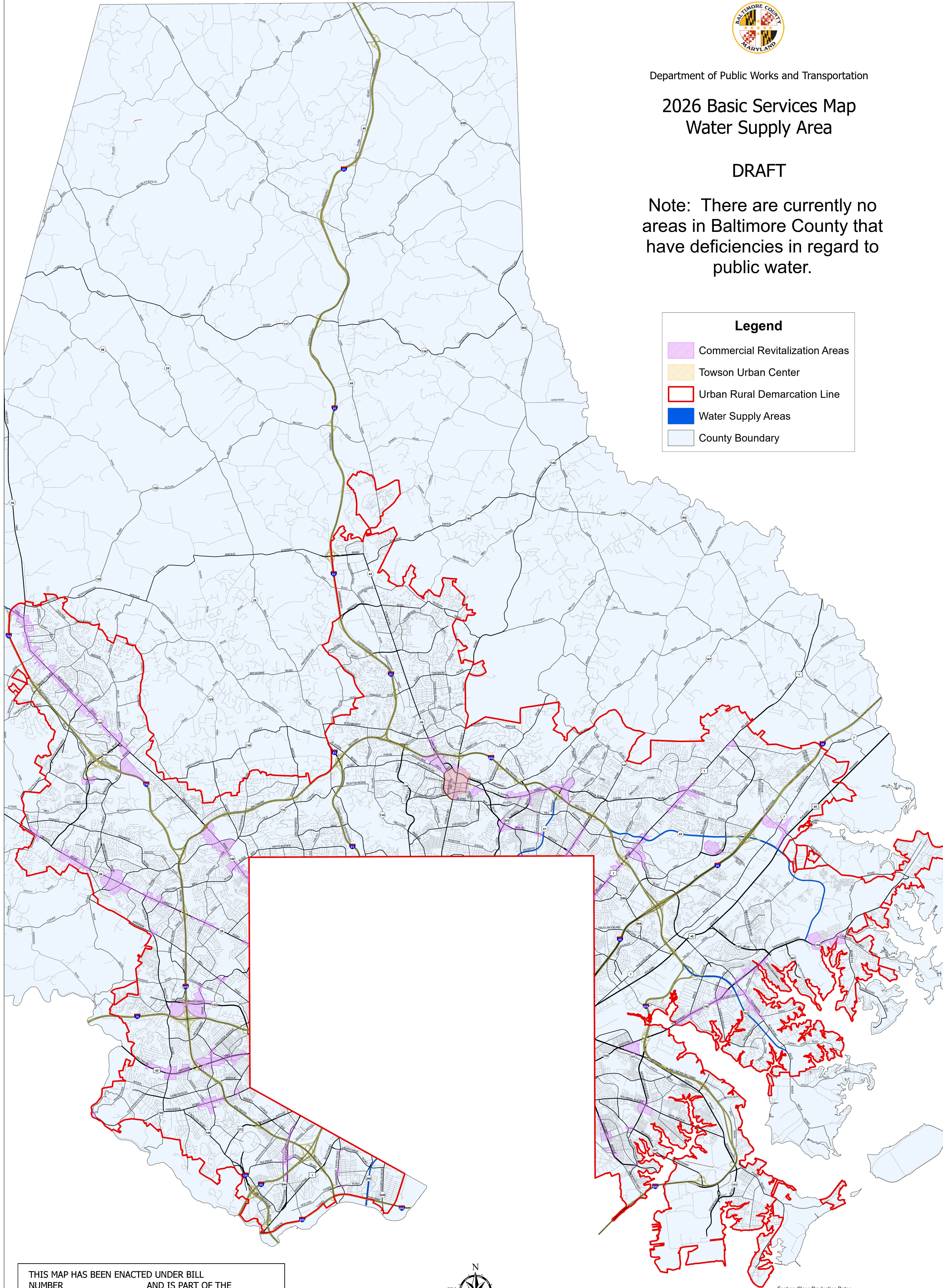
2026 Basic Services Map Water Supply Area

DRAFT

Note: There are currently no areas in Baltimore County that have deficiencies in regard to public water.

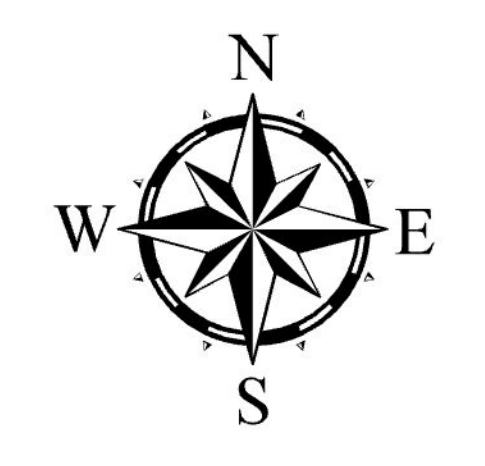
Legend

- Commercial Revitalization Areas
- Towson Urban Center
- Urban Rural Demarcation Line
- Water Supply Areas
- County Boundary



THIS MAP HAS BEEN ENACTED UNDER BILL NUMBER _____ AND IS PART OF THE BALTIMORE COUNTY ZONING REGULATIONS, 1955, AS AMENDED BY THE BILL ADOPTED _____ EFFECTIVE _____.

COUNTY COUNCIL OF BALTIMORE COUNTY



SCALE 1 INCH = 4,000 Feet



NOTE: The interpretation of the Basic Services Maps are subject to exceptions provided for in the Baltimore County Zoning Regulations, Article 4A Growth Management, Section 4A02 Basic Services Maps. These exceptions include those mapped in the County's geographic information system (GIS); the Urban and Rural Demarcation Line (URDL), Commercial Revitalization Districts (4A02.4 E.1.), and the Towson Urban Center (4A02.4 E.1.). The Towson Urban Center (Downtown Towson District) exists in the Master Plan 2020 in the Land Management Areas feature class.

Feature Class Production Dates	
Water Supply Area2026
Commercial Revitalization Districts2025
Towson Urban Center2011
Urban Rural Demarcation Line2012
Roads2026
County Boundary2008

Produced by Baltimore County Department of Public Works and Transportation
North American Datum 1983 HARN, U.S. Survey Foot
Published January 8, 2026